



Microsoft Windows XP USB Port Driver Installation Instructions

Introduction

The following instructions for USB driver installation are specifically for the Microsoft Windows® XP operating system. Some steps may be different and some screens may be changed for other Windows operating systems.

These instructions apply to the following relays:

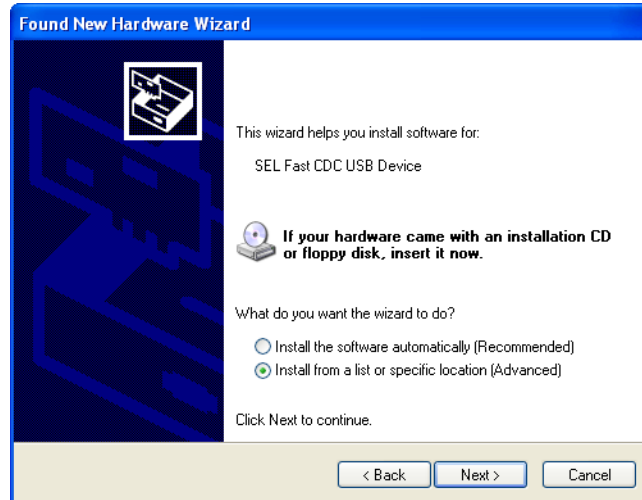
- SEL-311C
- SEL-351-5, -6, -7 Protection System
- SEL-351A Protection System
- SEL-351RS Kestrel
- SEL-351S Protection System
- SEL-651R-2
- SEL-T400L

Installation

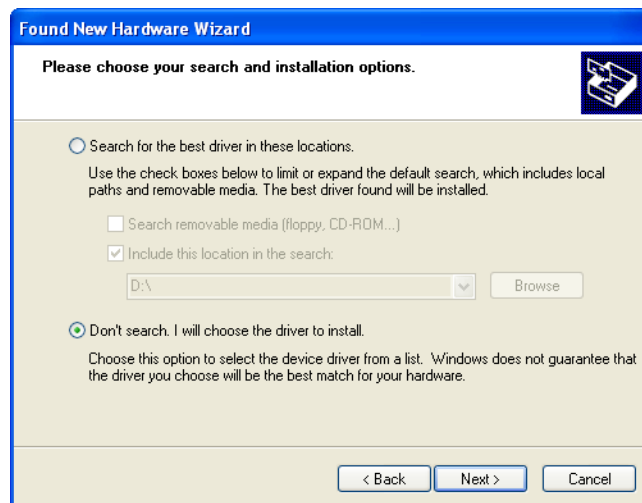
- Step 1. Retrieve the USB driver file “SEL Fast CDC USB Device.INF” from the appropriate product page on the SEL website (selinc.com), from the corresponding Product Literature CD, or from the ACSELERATOR QuickSet® SEL-5030 Installation CD. Place the INF file in any convenient directory, such as C:\SEL\Drivers\Relay_USB\.
- Step 2. Connect the relay to your PC with an SEL-C664 cable, or any standard A-to-B USB cable. Your PC will recognize that a new device has been connected, and will start the **Found New Hardware Wizard**. Select **No, not this time** and click **Next**. (Some Windows XP systems will skip this screen and go to the screen shown in *Step 3*.)



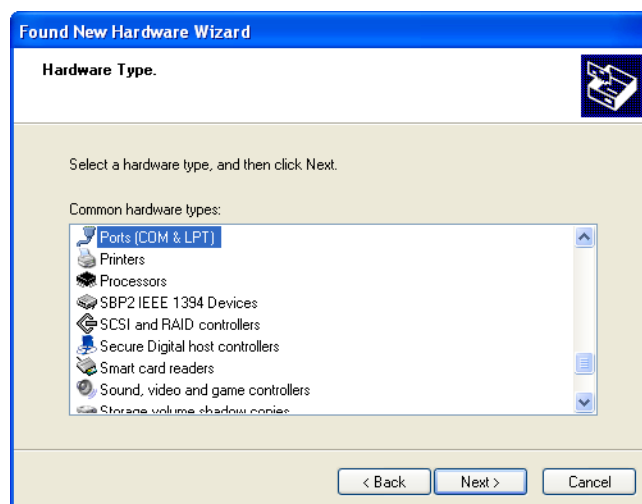
Step 3. Select **Install from a list or specific location (Advanced)**. Click **Next**.



Step 4. Select **Don't search. I will choose the driver to install**. Click **Next**.



Step 5. If prompted for a hardware type, select **Ports (COM & LPT)** and click **Next**. Some Windows XP systems will skip this screen and go to the next screen.



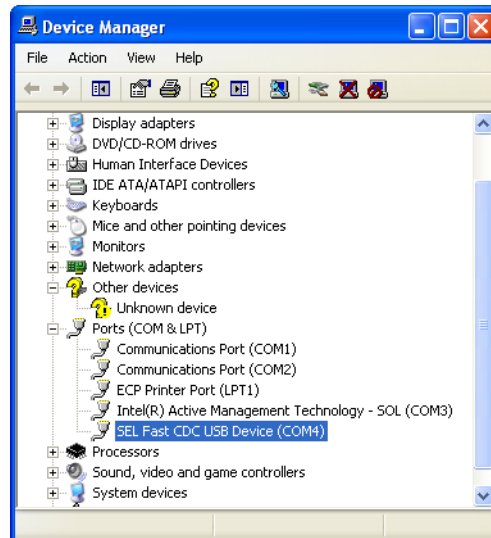
- Step 6. If necessary, use the **Have Disk** button and direct the wizard to the folder containing the INF file you copied to your local drive in *Step 1*. After you locate the INF file, the **Found New Hardware Wizard** will return to the screen shown below. Verify the selected **Model** is **SEL Fast USB CDC Device**. Click **Next**.



- Step 7. If Windows warns that the driver has not passed Windows Logo testing, verify that the name **SEL Fast CDC USB Device** matches the Model selected in *Step 6*, and then click **Continue Anyway**. Please wait while the wizard installs the driver software.
- Step 8. Click **Finish** to finish the installation process.



The USB port driver is now installed, and a new virtual COM port (e.g., COM 4) is ready for use. To see what virtual COM port has been created, launch any communications program that allows selection of a COM port and view the available ports, or go to the Windows Device Manager and inspect the available COM ports as shown below. Use Device Manager to verify which virtual COM port is associated with a particular physical USB port. Device Manager updates the available COM ports each time a cable is inserted or removed.



To test the USB port and the newly installed driver, follow these steps:

- Step 1. Launch QuickSet, and select **Communications > Parameters** from the menu, or click the **Communications Parameters** icon from the opening screen.

For the SEL-311C, SEL-351-5, -6, -7, SEL-351A, and SEL-351S, see *Appendix C: PC Software* of the product instruction manual for more information on QuickSet. For the SEL-351RS Kestrel and SEL-651R-2, see *Section 3: PC Software* of the product instruction manual for more information on QuickSet. For the SEL-T400L, see *Section 8: Engineering and Operator Access Interfaces and Tools* of the product instruction manual for more information on QuickSet.

- Step 2. Select the new COM port created by the driver installation process, e.g., COM 4 in the screen capture.

Ignore other settings like parity and baud rate. They have no effect on how the USB port operates, and are only presented to the operating system to retain compatibility with certain applications.

- Step 3. Select **Communications > Terminal** from the menu, or click the terminal icon on the tool bar.

- Step 4. Log in to the relay normally.

The USB port should work similarly to an EIA-232 port, only much faster. See *Section 10: Communications* of the product instruction manual for a list of features available from the USB port.

For additional technical assistance call +1.509.338.3838

WARNING

Operator safety may be impaired if the device is used in a manner not specified by SEL.

© 2009-2017 by Schweitzer Engineering Laboratories, Inc. All rights reserved.

All brand or product names appearing in this document are the trademark or registered trademark of their respective holders. No SEL trademarks may be used without written permission. SEL products appearing in this document may be covered by U.S. and Foreign patents.

Schweitzer Engineering Laboratories, Inc. reserves all rights and benefits afforded under federal and international copyright and patent laws in its products, including without limitation software, firmware, and documentation.

The information in this document is provided for informational use only and is subject to change without notice. Schweitzer Engineering Laboratories, Inc. has approved only the English language document.

This product is covered by the standard SEL 10-year warranty. For warranty details, visit selinc.com or contact your customer service representative.

AVERTISSEMENT

La sécurité de l'opérateur peut être compromise si l'appareil est utilisé d'une façon non indiquée par SEL.

SCHWEITZER ENGINEERING LABORATORIES, INC.

2350 NE Hopkins Court • Pullman, WA 99163-5603 U.S.A.
Tel: +1.509.332.1890 • Fax: +1.509.332.7990
selinc.com • info@selinc.com

